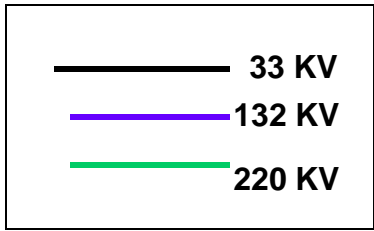

TRANSMISSION PLAN FOR KURTHALA (RAVI BASIN) ZONE

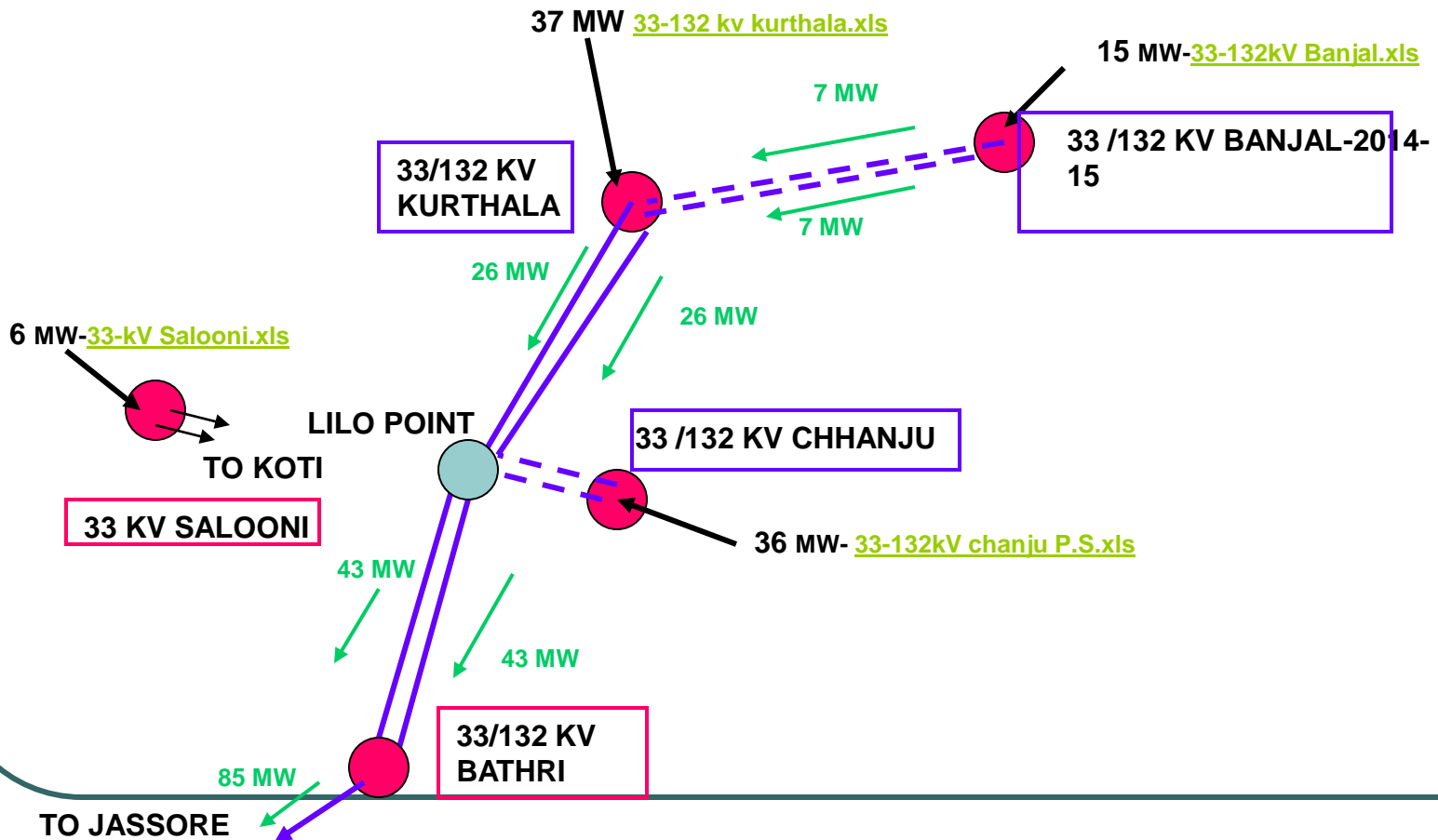
INJECTION POINTS OF HPSEBL / HPPTCL [TOTAL SMALL.xls](#)

Sr.N	Interfacing S/S	Injection (MW)	LINK
1	33/132 KV Sub station at Kurthala	162	33-132 kv kurthala.xls
2	33/132 kV sub station at Banjal;	81	33-132kV Banjal.xls
3	33/132 kV Chhanju	132	33-132kV chanju P.S.xls
4	33/132/220 kV Mazra	48	33-132-220 kV Mazra.xls
5	33 kV Salooni	58.5	33-kV Salooni.xls
	TOTAL	481.5	

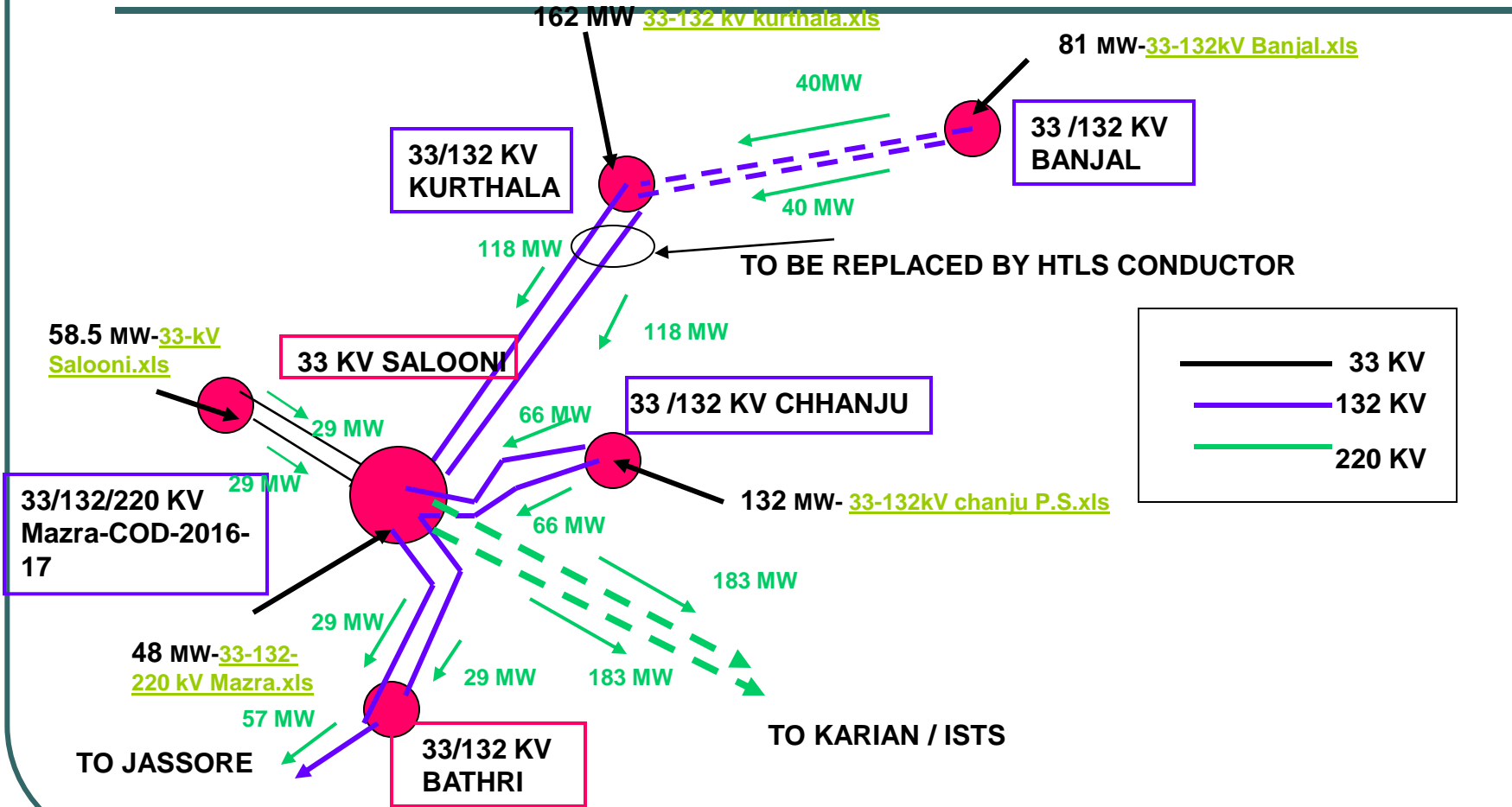
2015 SCENARIO



kurt15.jpeg



13TH PLAN SCENARIO



33-132 kv kurthala.xls



GALUA-5 MW

SATNAL-0.5 MW

TARAILA-II-5 MW

KURTHALA

33 kV

UPPER JOINR (12 MW)

EO 5 MW

OWER TARALA 5 MW

MALIN-2.8 MW

SAI KOTMI-I-15 MW

Upper JOINER-II -8 MW

HYSRUND-3MW

TO BATHRI

37

Tissa

Joiner-3 MW



FROM KURTHALA



er-3 MW

132 kV D/C

Kamil-4 MW

33 kV

Durkund-I-3 MW

upper Bhararu-3.5 MW

BHARARU-2 MW

Chanju-II-19.8 MW

kror

Chanju-I-36 MW

132 kV D/C

33 kV

Tanger Chanju-9 M

Kaplwada

Lower Chhanju-4 MW

Upper Chhanju-5 MW

132 kV D/C

Chanju Mehad-8 MW

Dukrund-3 MW

132 kV D/C

aira Siul SW

-CHHATRI-2.5 MW

LILO POINT AT MAZRA

Duali

33-kV Salooni.xls

Works Mazra.xls

132 KV D/C from Kurthala

132 KV D/C from Chanju

Siul-I-5 MW

Siul-II-5 MW

DAND-2 MW

SIUL BAROTI-4.5 MW

33 kV D/C
Siul-13 MW

Bulgani-Sundla-48 MW

Baira Siul SW

Kahel

KALEHL-CHHATRI-2.5 MW

33 kV

33 KV Salooni

33/132/220 KV MAZRA

33/132/220 KV MAZRA

220 kV D/C

To Karian

33 kV D/C

Lachodi

Koti 33 kV

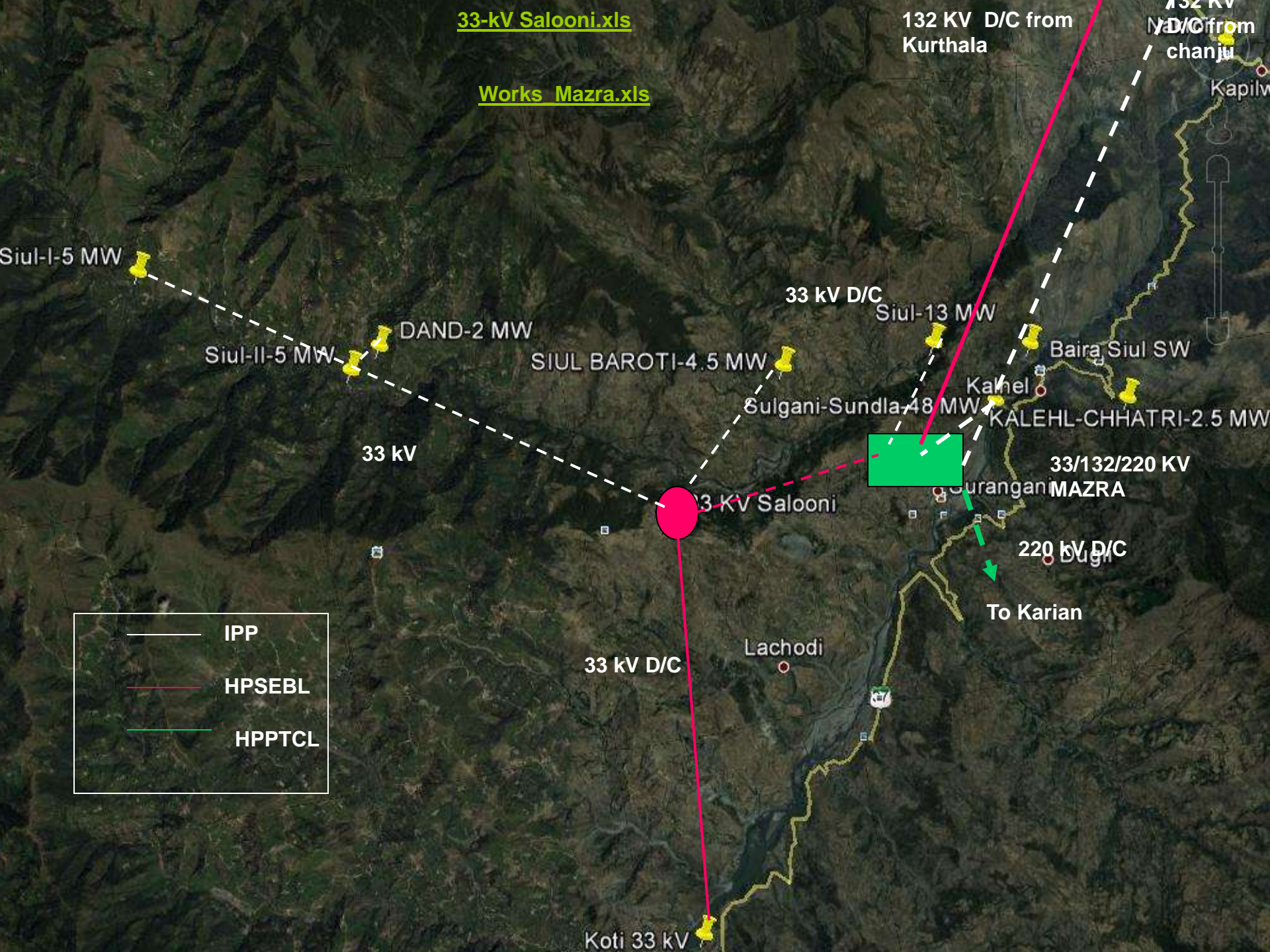
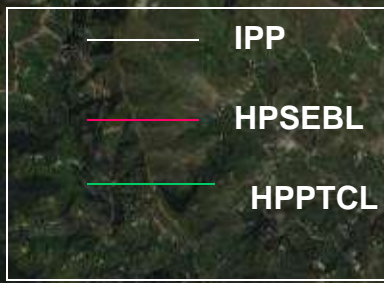
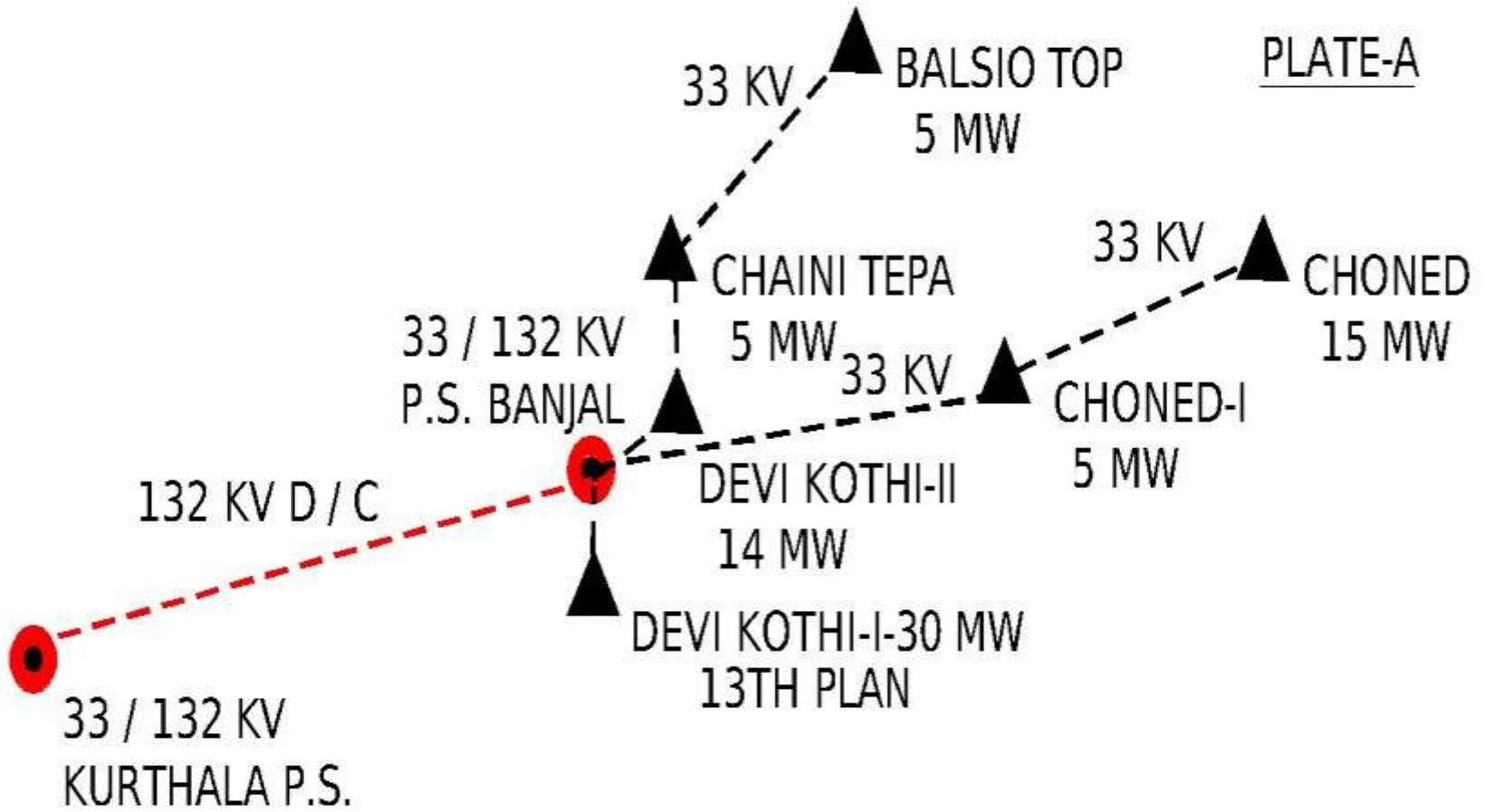
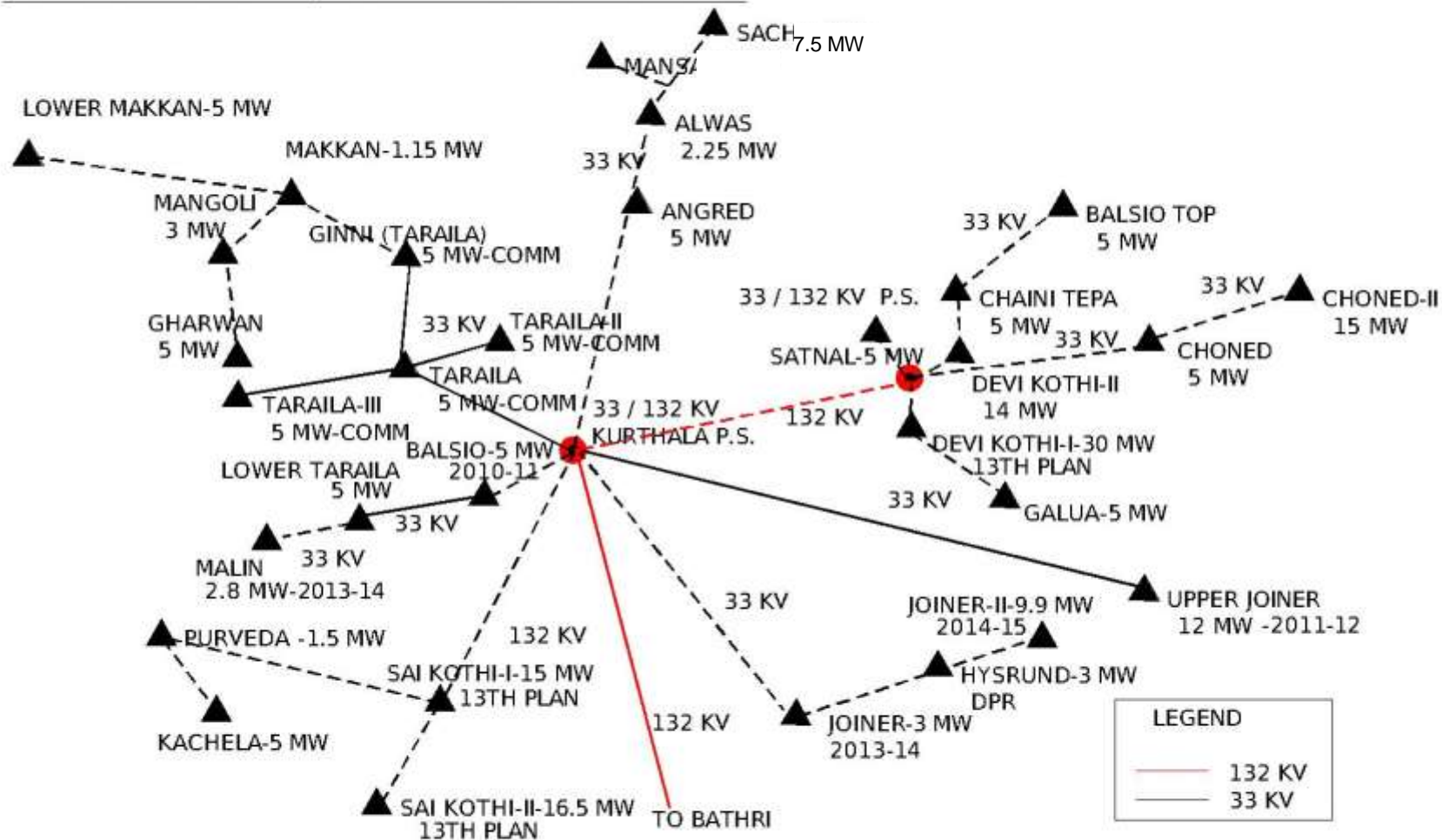




PLATE-A



EVACUATION PLAN FOR PROJECTS IN RAVI BASIN-KURTHALA ZONE



EVACUATION PLAN FOR PROJECTS IN RAVI BASIN- KURTHALA ZONE

