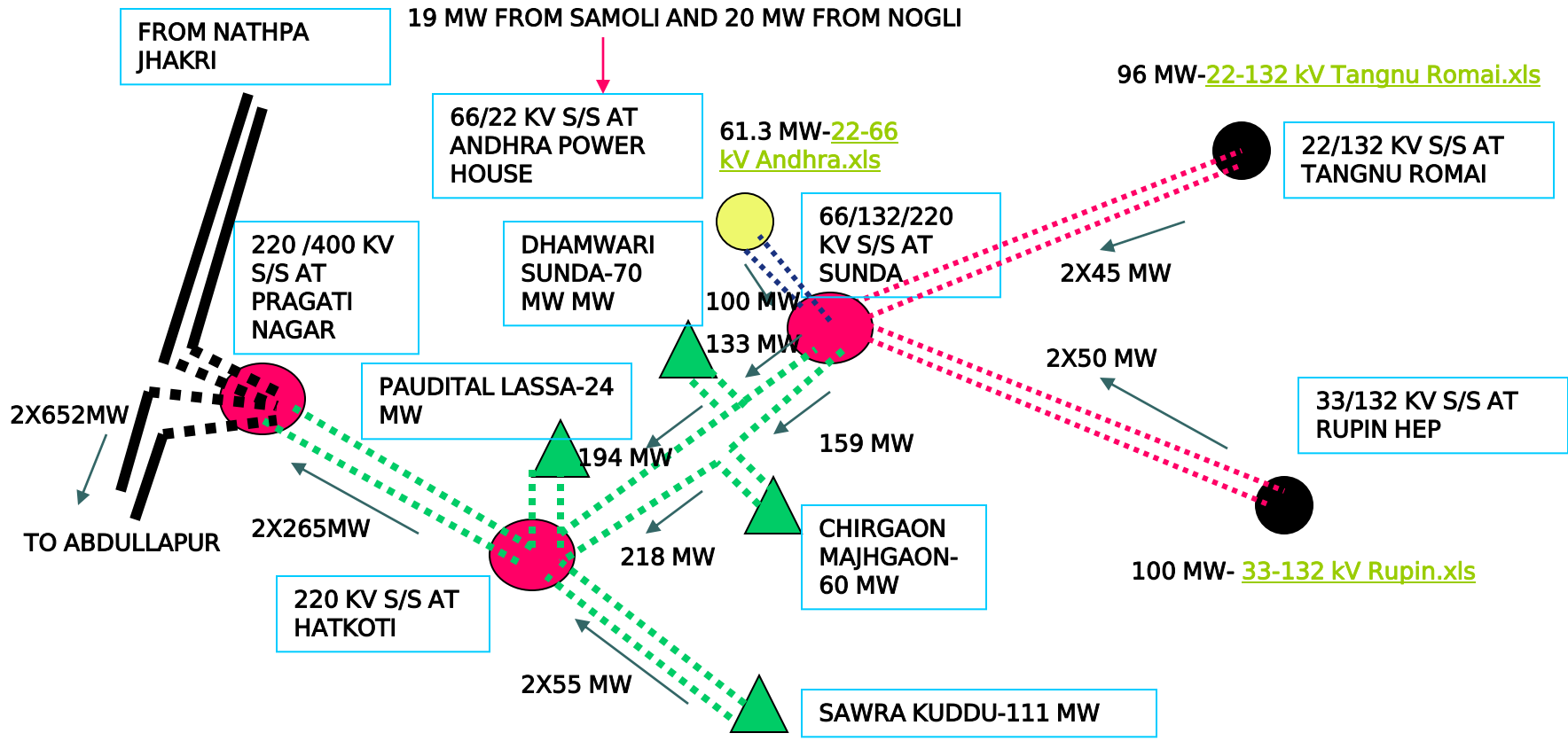
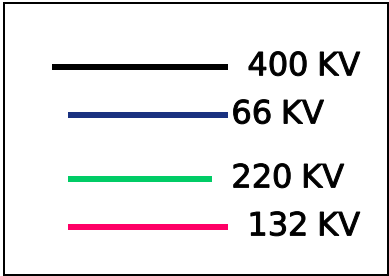

TRANSMISSION PLAN FOR PABBAR VALLEY (YAMUNA BASIN)-

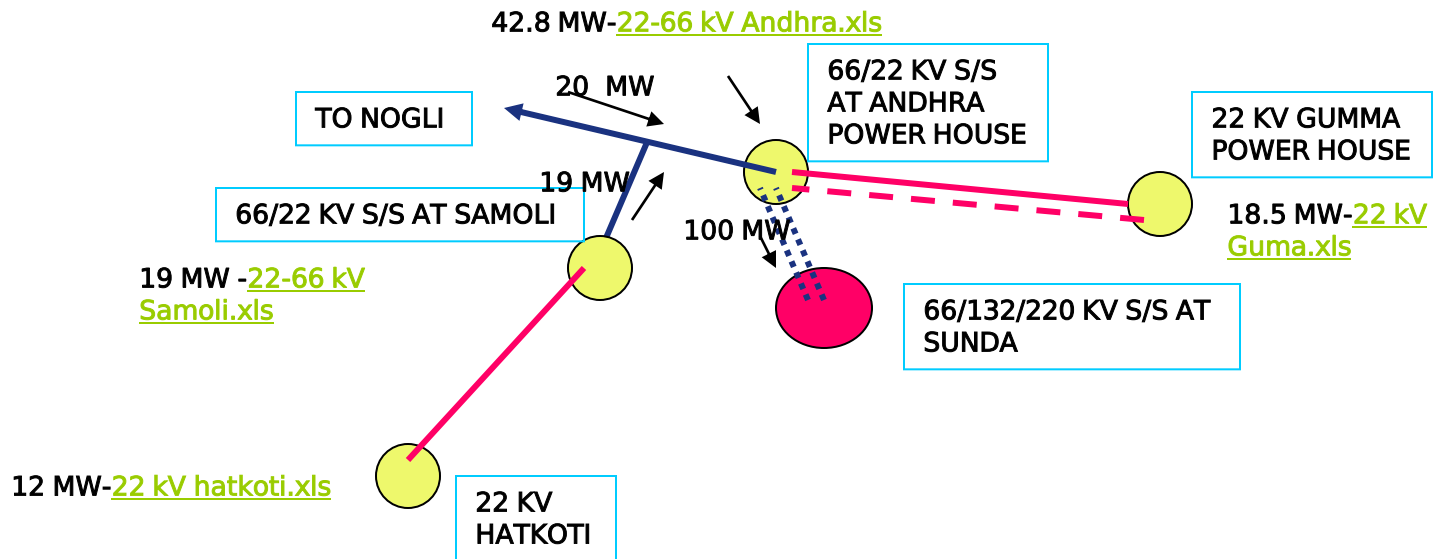
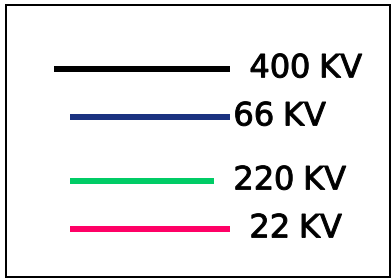
INJECTION POINTS OF HPSEBL / HPPTCL [TOTAL SMALL.xls](#)

Sr.N	Interfacing S/S	Injection (MW)	LINK
1	33/132 kV sub station at Rupin HEP	100.6	33-132 kV Rupin.xls
2	22/132 kV sub station at Tangnu Romai HEP	96	22-132 kV Tangnu Romai.xls
3	66/22 kV Andhra	42.8	22-66 kV Andhra.xls
4	22 kV Gumma	18.5	22 kV Guma.xls
5	22 kV Hatkoti	12	22 kV hatkoti.xls
6	66/22 kV Samoli sub station	19	22-66 kV Samoli.xls
	• Total Injection at 66/132/220 kV Sunda Sub station	288.9	
	Sawra Kuddu	111	220 kV Hatkoti Switching Station.xls
	Dhamwari Sunda	70	
	Chirgaon Majhgaon	60	
	Paudital Lassa	24	
	TOTAL POTENTIAL	553.9	

Works PABBAR
BASIN.xls



Works andhra.xls



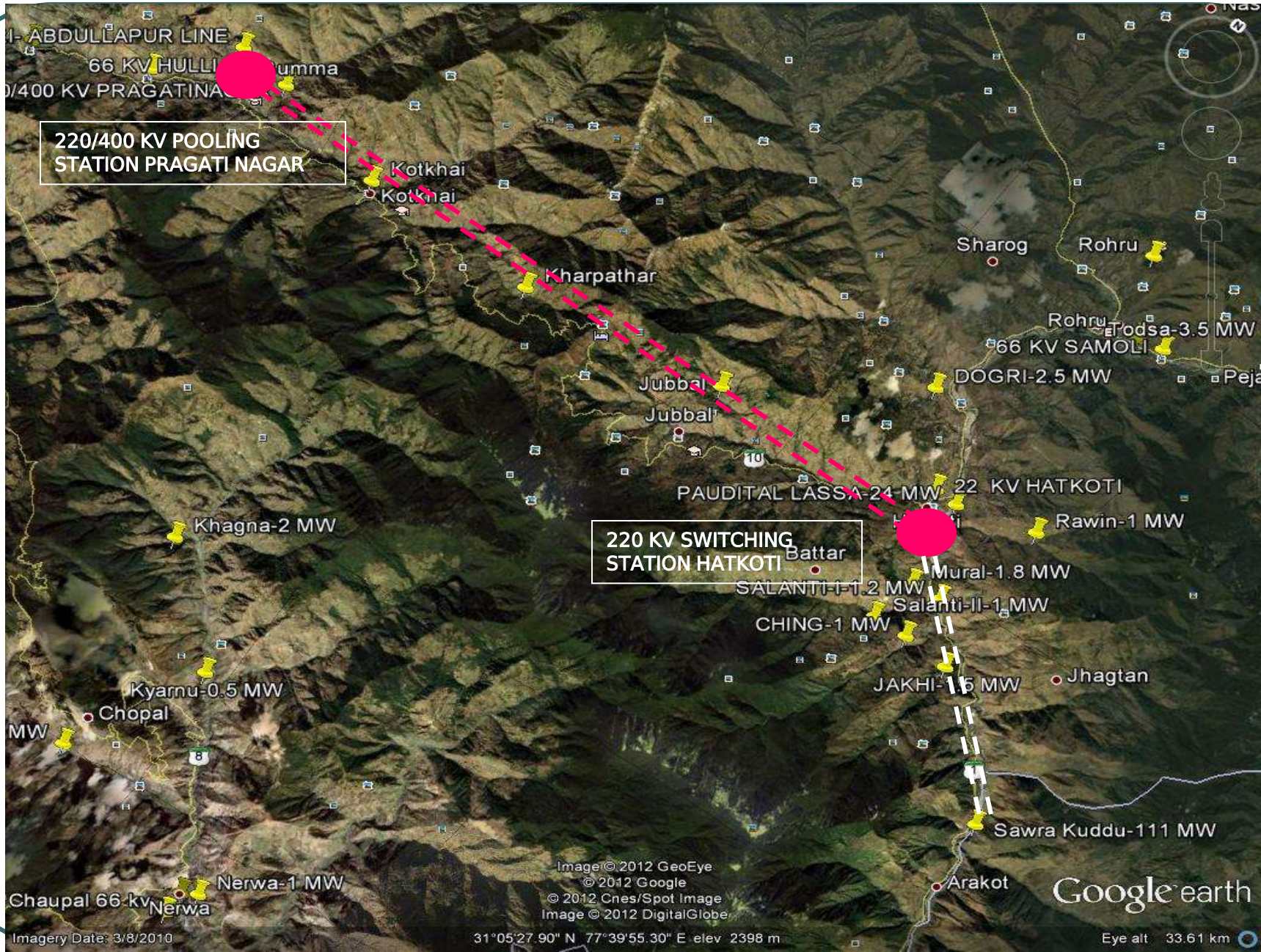


Image © 2012 GeoEye
 © 2012 Google
 © 2012 Cnes/Spot Image
 Image © 2012 DigitalGlobe

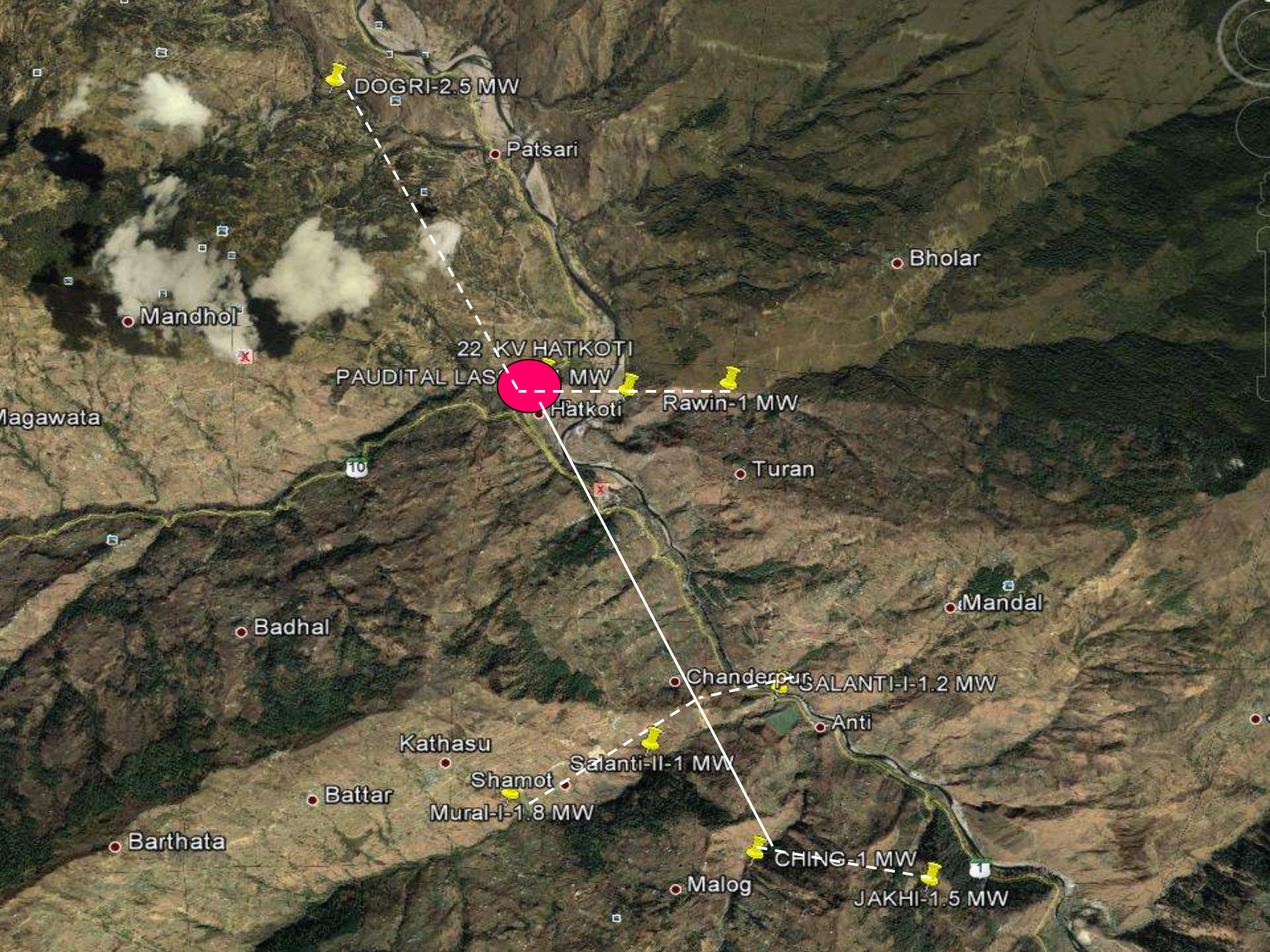
Google earth

Imagery Date: 3/8/2010

31°05'27.90" N 77°39'55.30" E elev 2398 m

Eye alt 33.61 km





DOGRI-2.5 MW

Patsari

Bholar

Mandhol

22 KV HATKOTI
PAUDITAL LAS... MW

Hatkoti

Rawin-1 MW

Magawata

10

Turan

Mandal

Badhal

Chanderpur SALANTI-I-1.2 MW

Anti

Kathasu

Salanti-II-1 MW

Battar

Shamot

Mural-I-1.8 MW

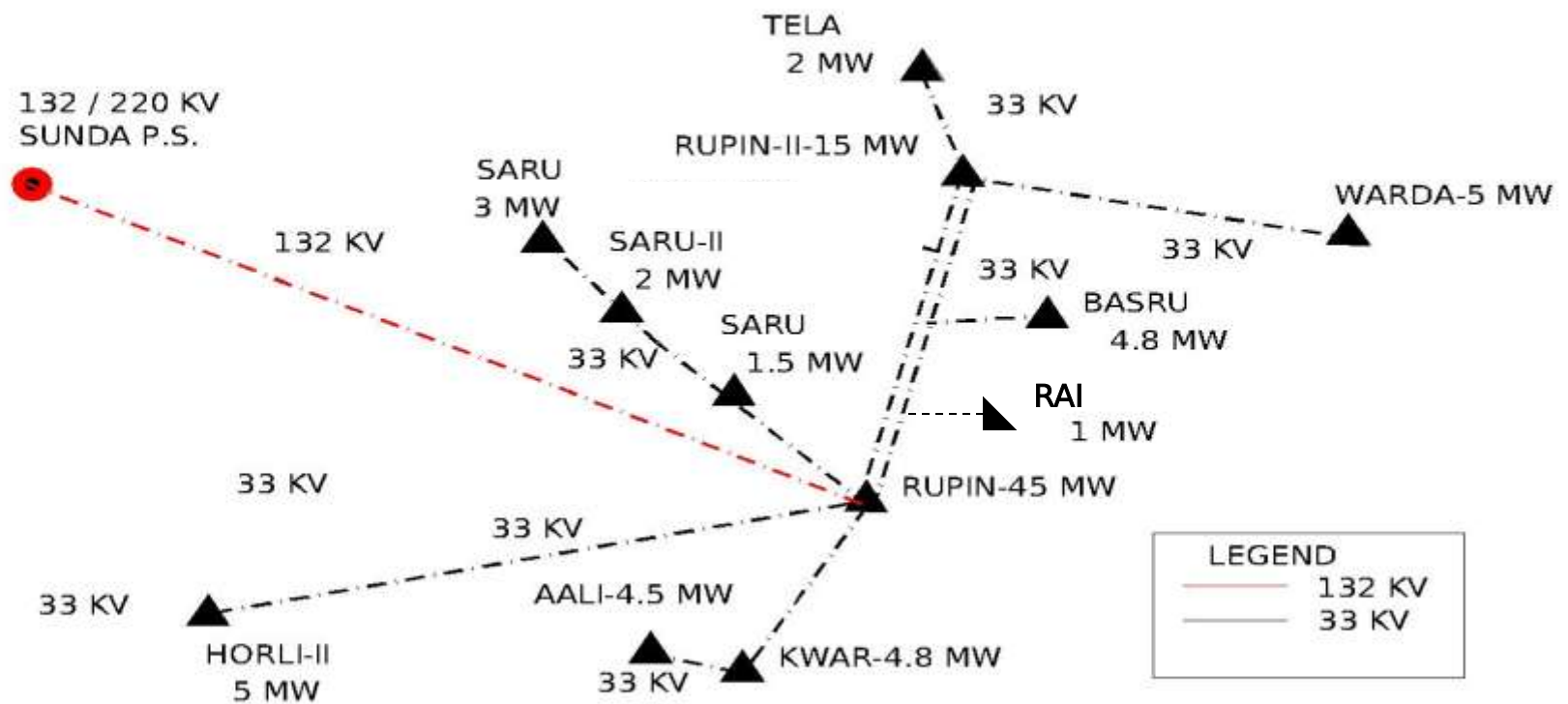
Barthata

Malog

CHING-1 MW

JAKHI-1.5 MW

EVACUATION PLAN FOR RUPIN VALLEY-ANDHRA NOGLI ZONE





Supin-7 MW

Sundru-5 MW

CHANDERNAHAN-4.8 MW

Janglik

TANGNU-2 MW

JANGLIK-18 MW

TANGNU ROMAI-II-6 MW

Tangnu

22 KV

TO SUNDA

Tangnu Romai-I-44 MW

© 2012 Google
Image © 2012 GeoEye
© 2012 Mapabc.com

Google earth

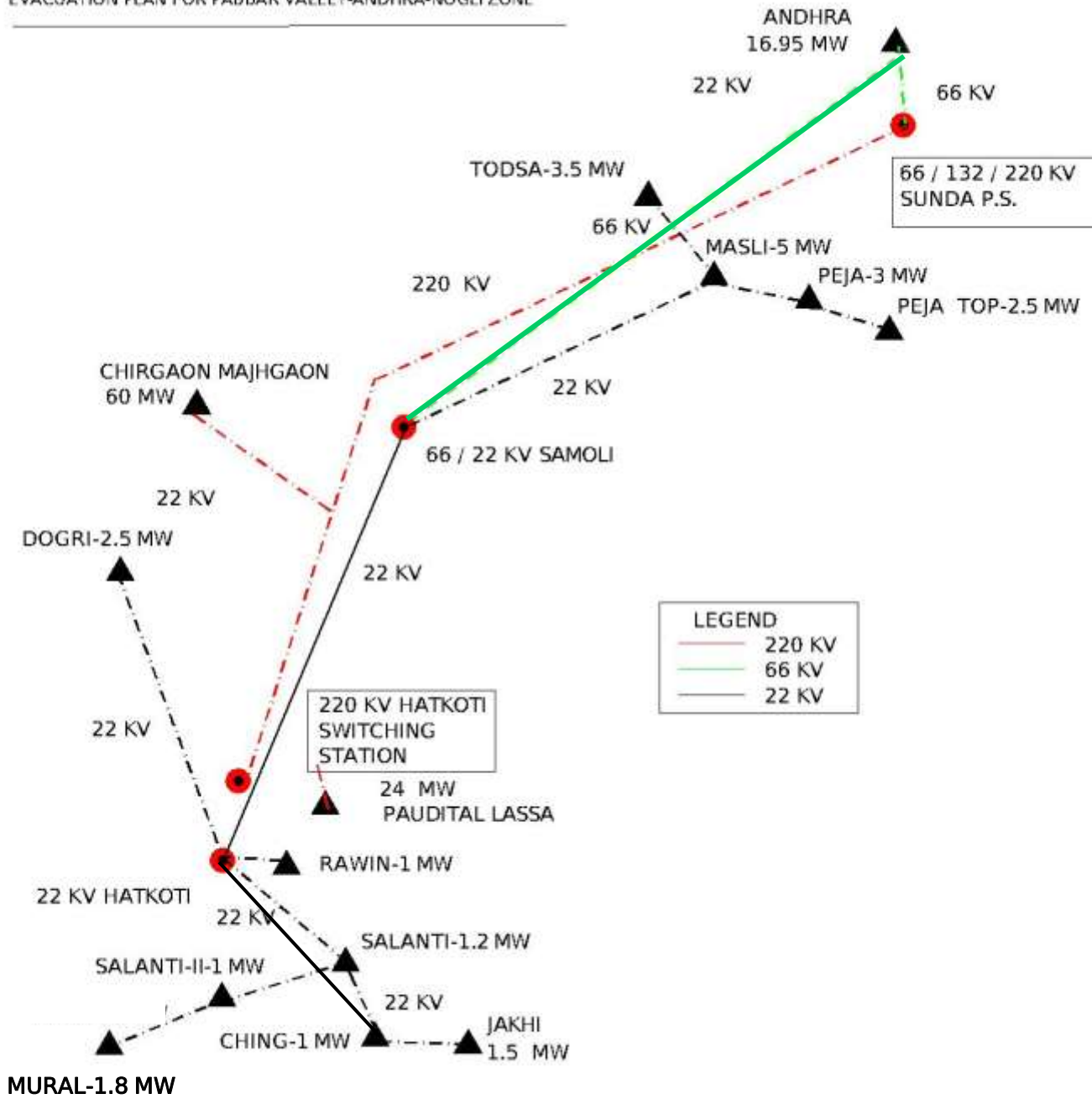
Imagery Date: 3/8/2010

2004

31°18'16.81" N 78°00'52.87" E elev 3205 m

Eye alt 8.83 km

EVACUATION PLAN FOR PABBAR VALLEY-ANDHRA-NOGLI ZONE



LEGEND

- 220 KV
- 66 KV
- 22 KV

EVACUATION PLAN FOR PABBAR VALLEY-ANDHRA NOGLI ZONE

